

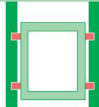
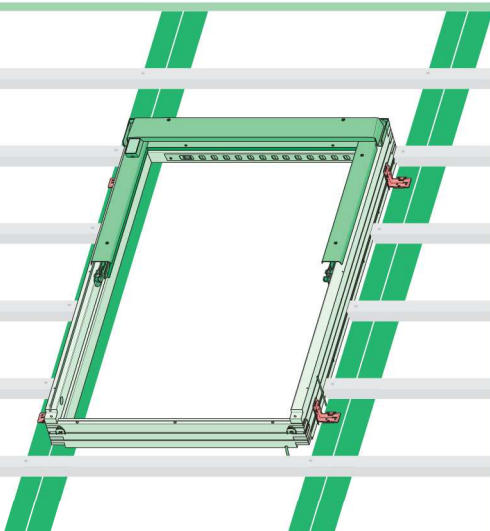
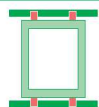
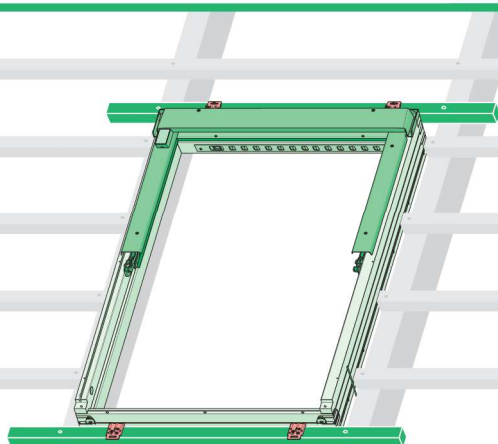
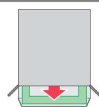


**FAKRO®**

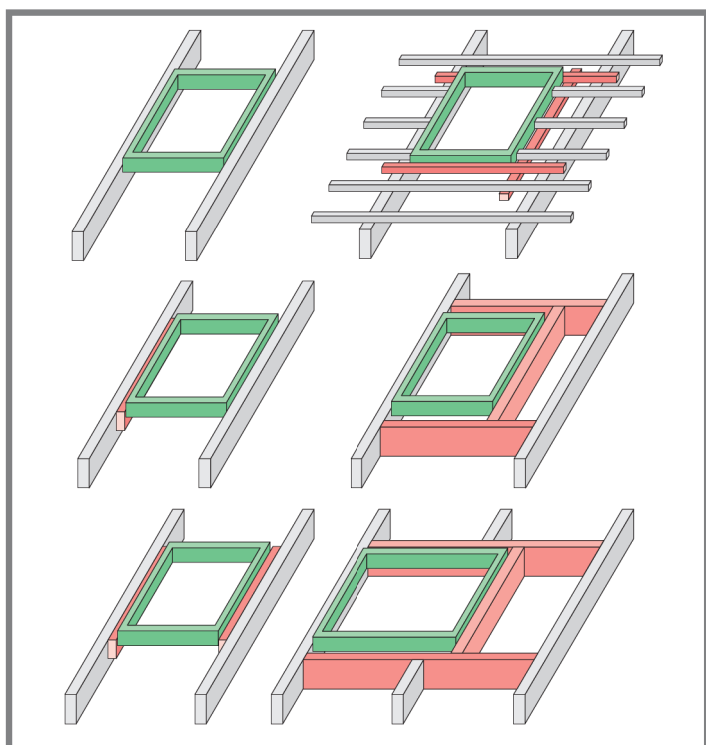
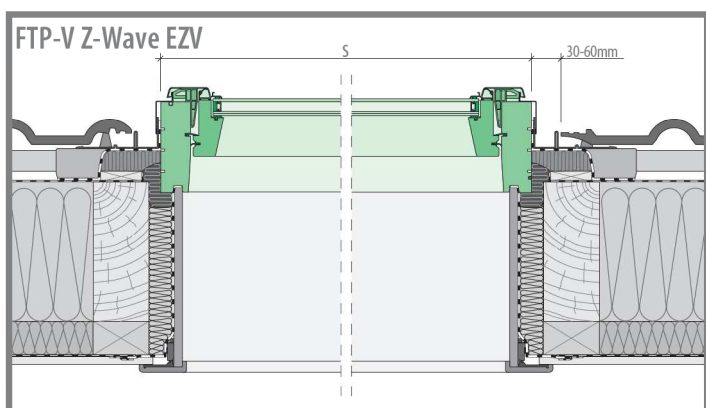
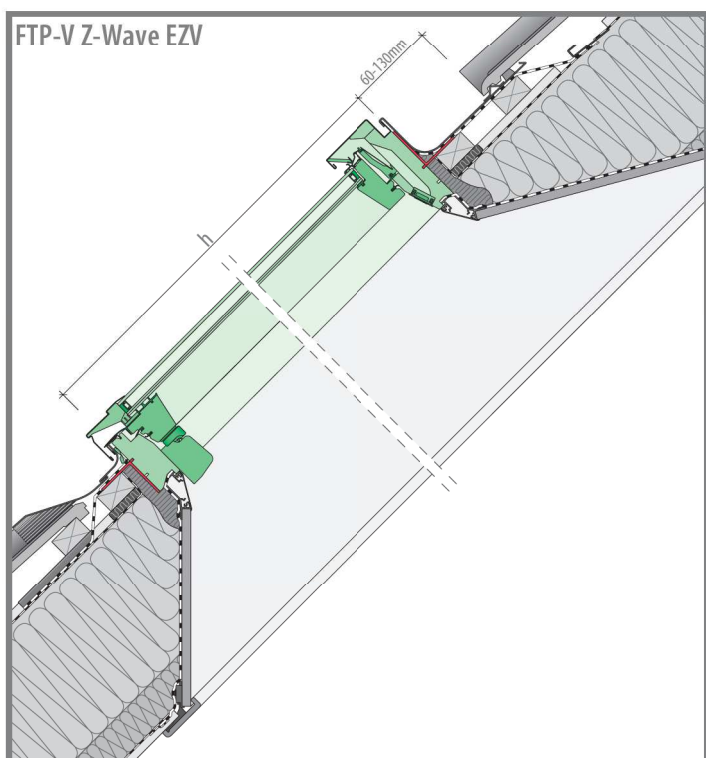
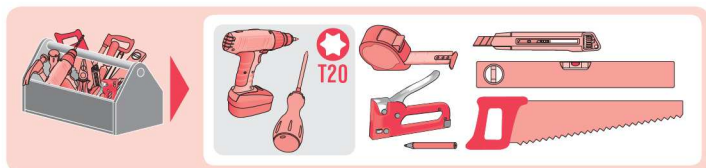
# FTP-V Z-Wave

# FTU-V Z-Wave

# FTW-V Z-Wave



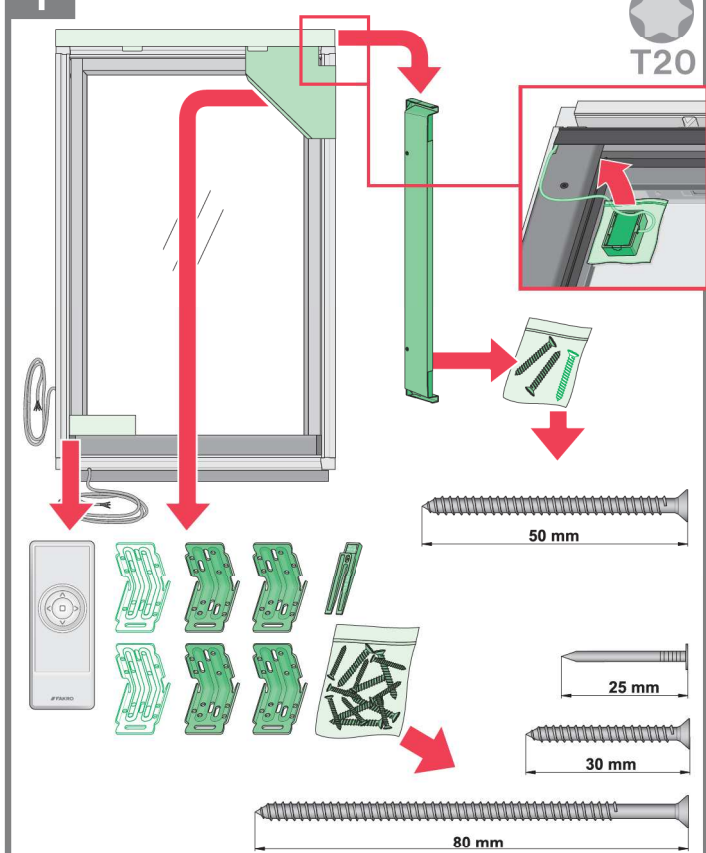
<http://www.fakro.com/download/film-installation-instructions/roof-windows/>



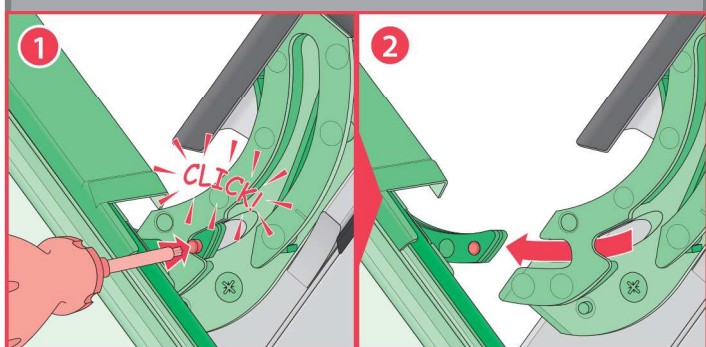
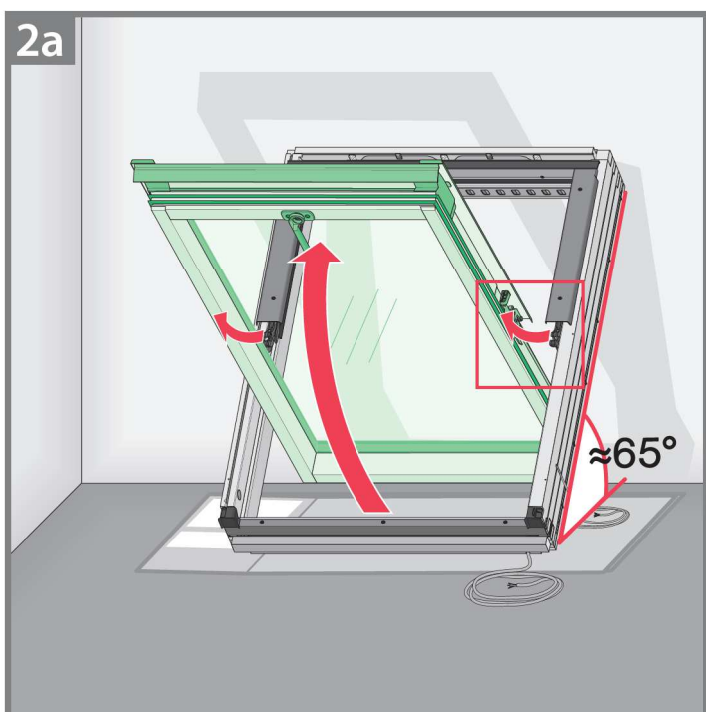


1

T20

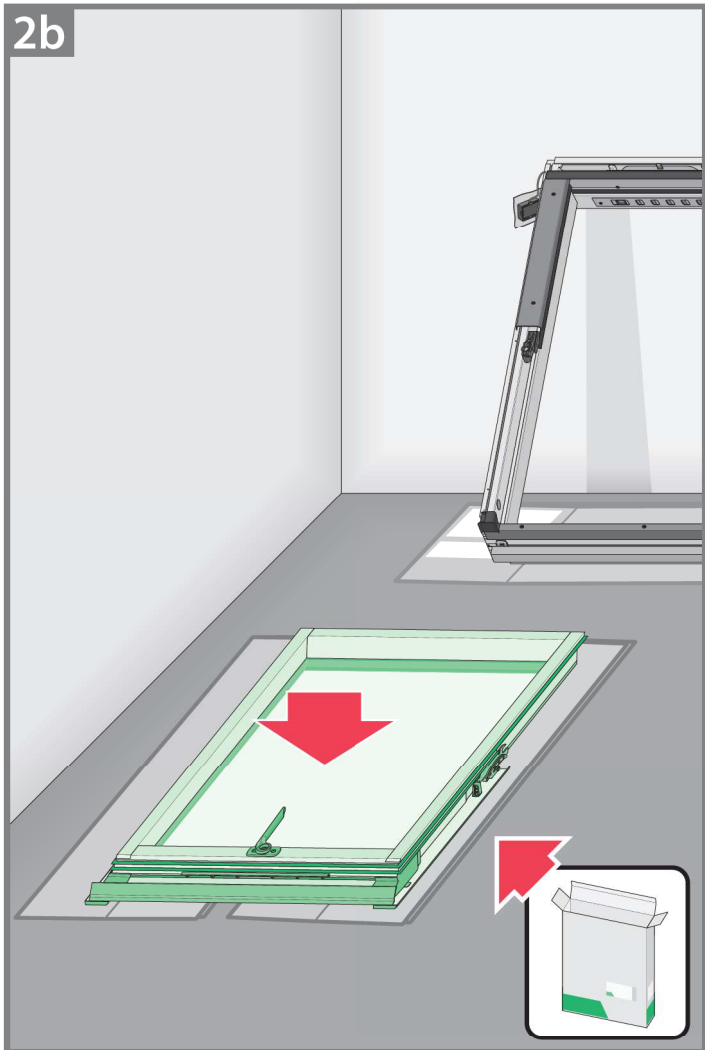


2a

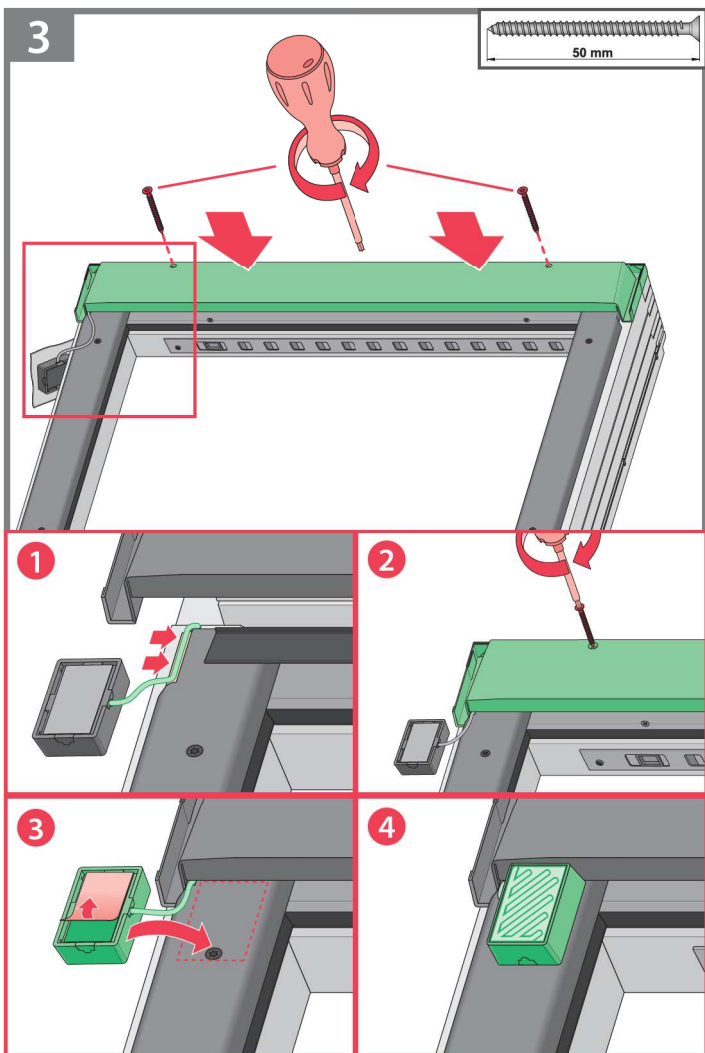


3

2b

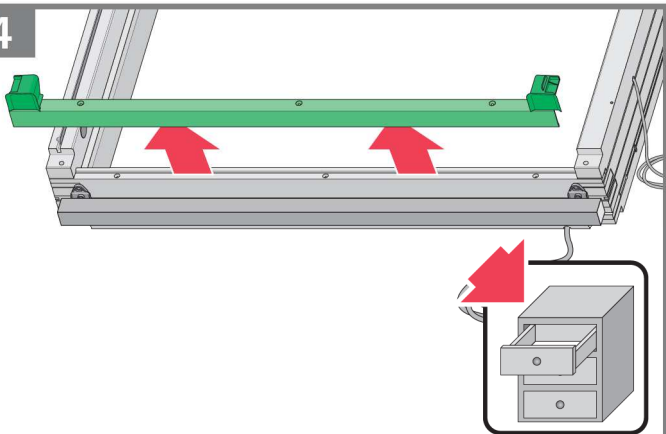


3

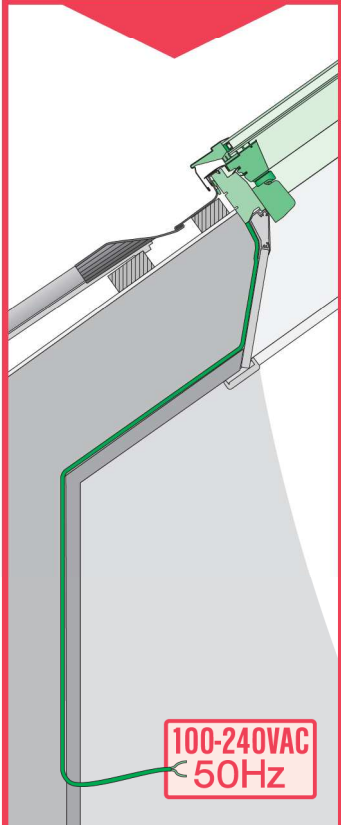
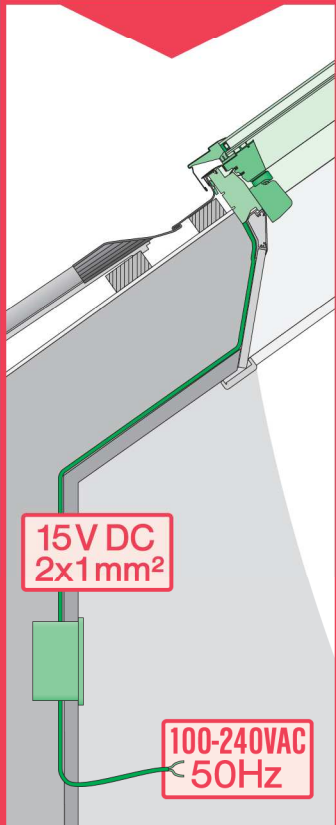
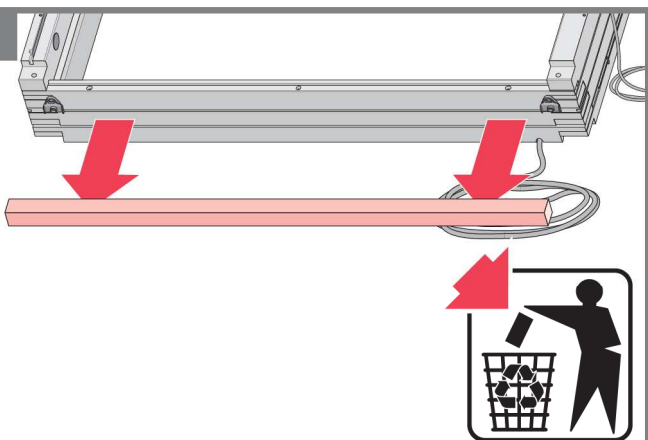


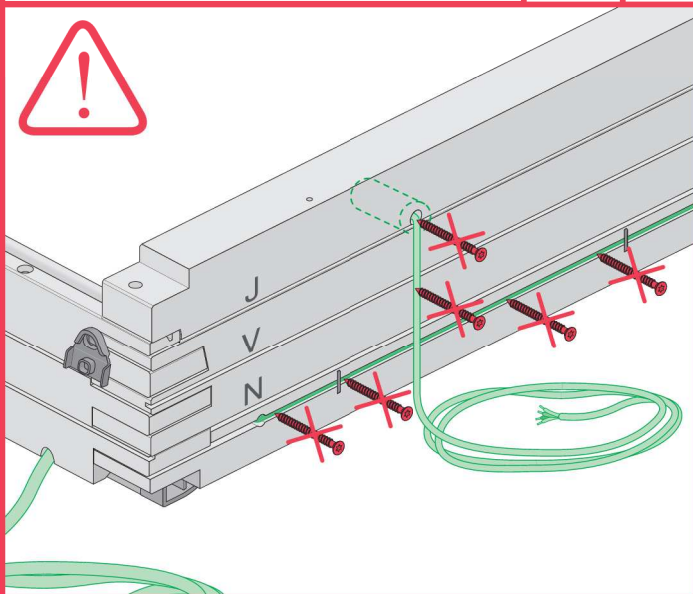
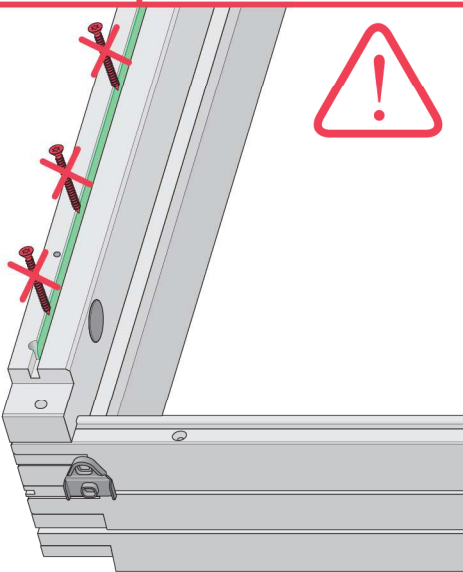
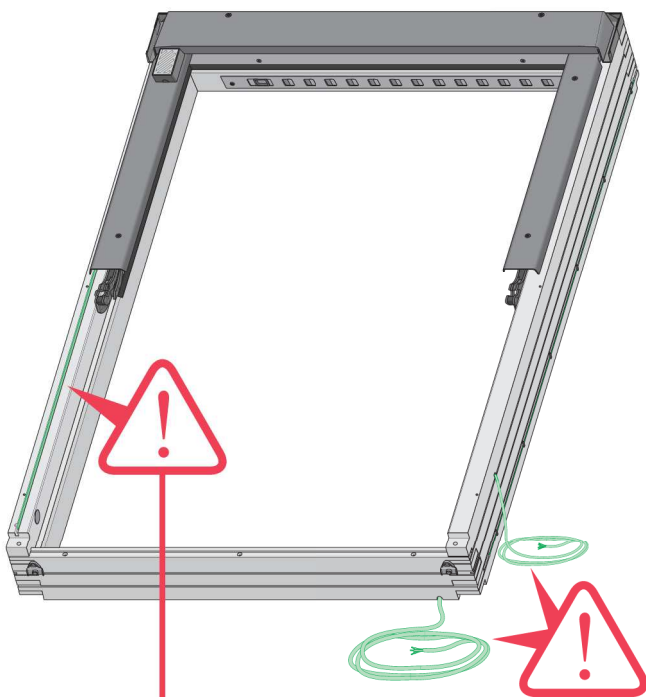


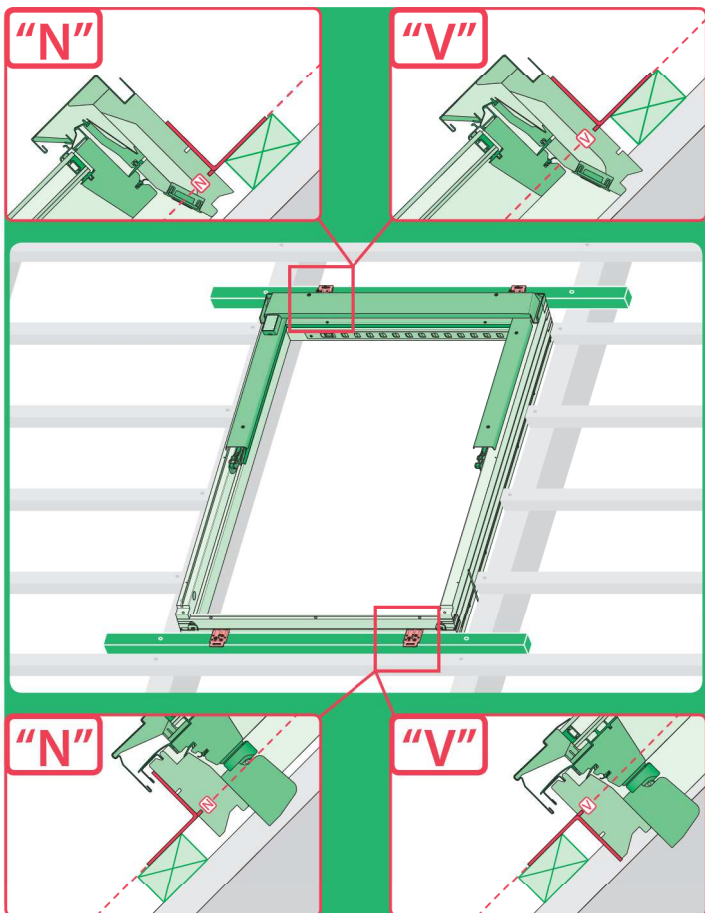
4



5

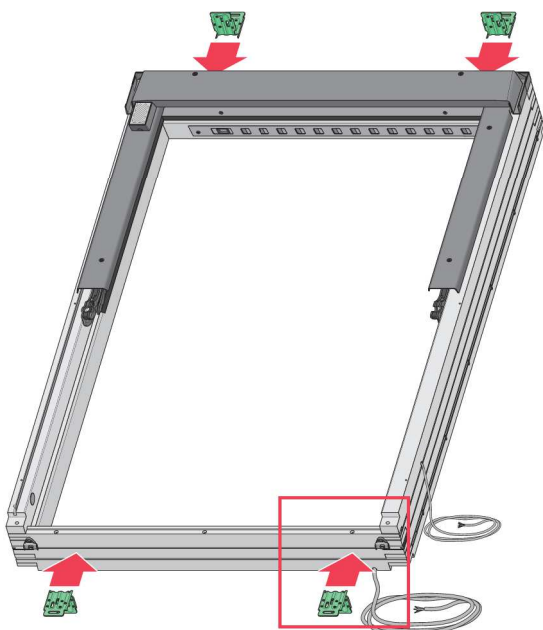




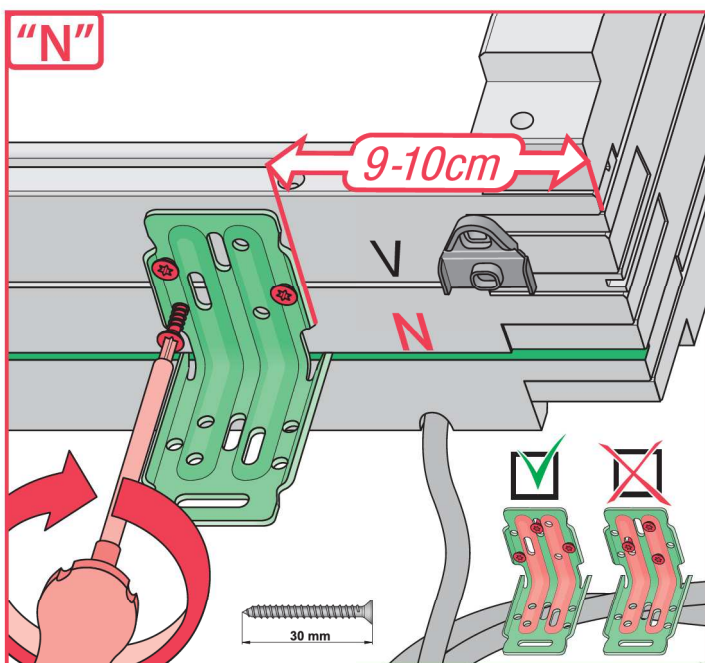


	 max 90mm	EHN		
		EHV		
		-	-	-
	 max 45mm	EZN		
		EZV		
		-	-	-
	 max 15mm (N) max 5mm (V)	ELN		
		ELV		
		-	-	-
	 max 5mm	ESN		
		ESV		
		-	-	-

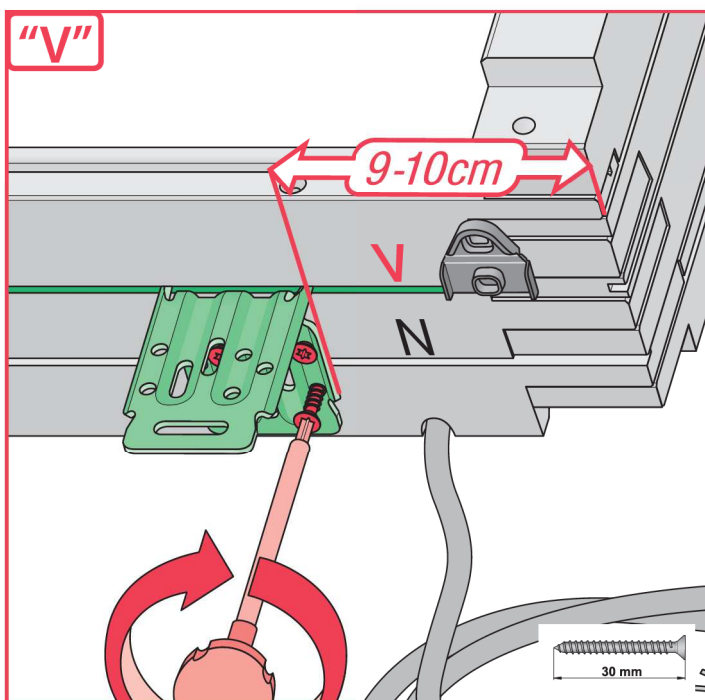
1



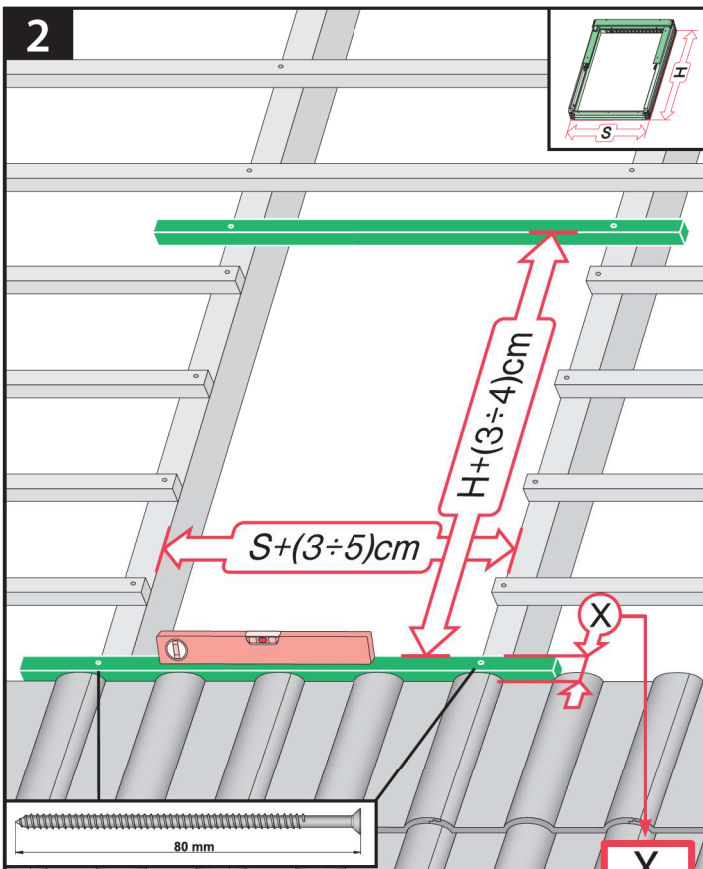
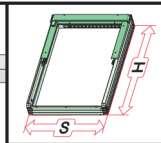
"N"



"V"



2



X



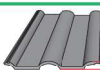
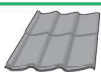
max 90mm

EHN

7-10cm

EHV

7-10cm



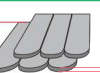
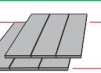
max 45mm

EZN

6-8cm

EZV

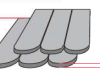
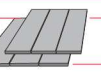
6-8cm



12-16mm

EGV

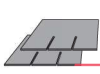
6cm



12-16mm

EPV

6cm

max 5mm (V)  
max 15mm (N)

ELN

0-2cm

ELV

0-2cm



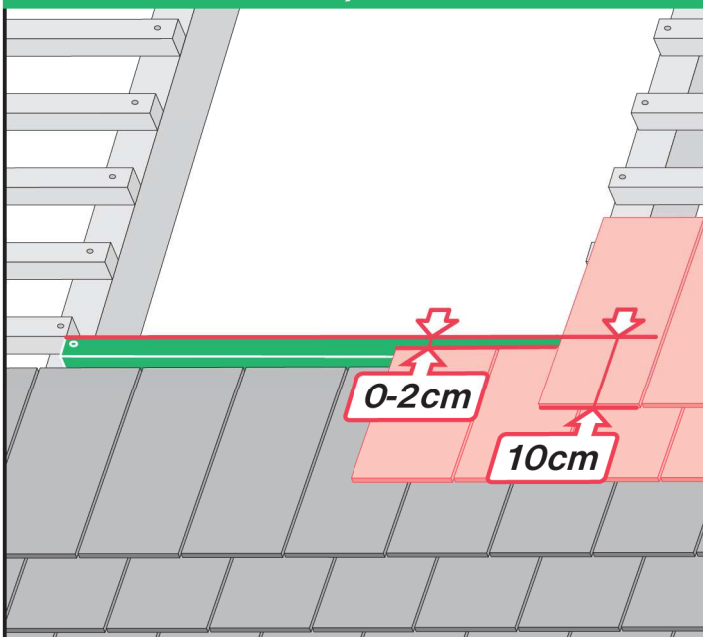
EEN

0-2cm

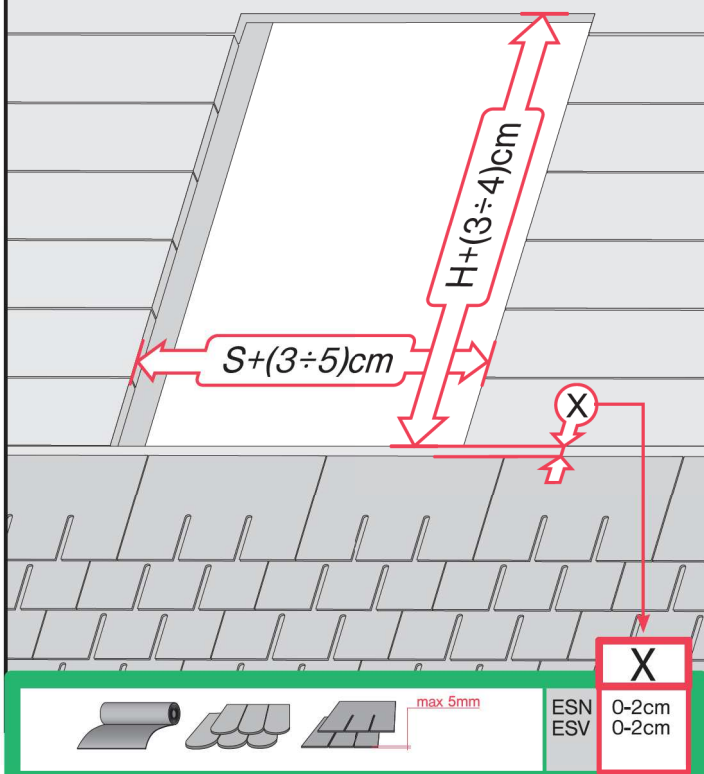
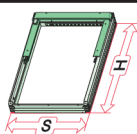
EEV

0-2cm

## ELN, ELV



3



ESN, ESV

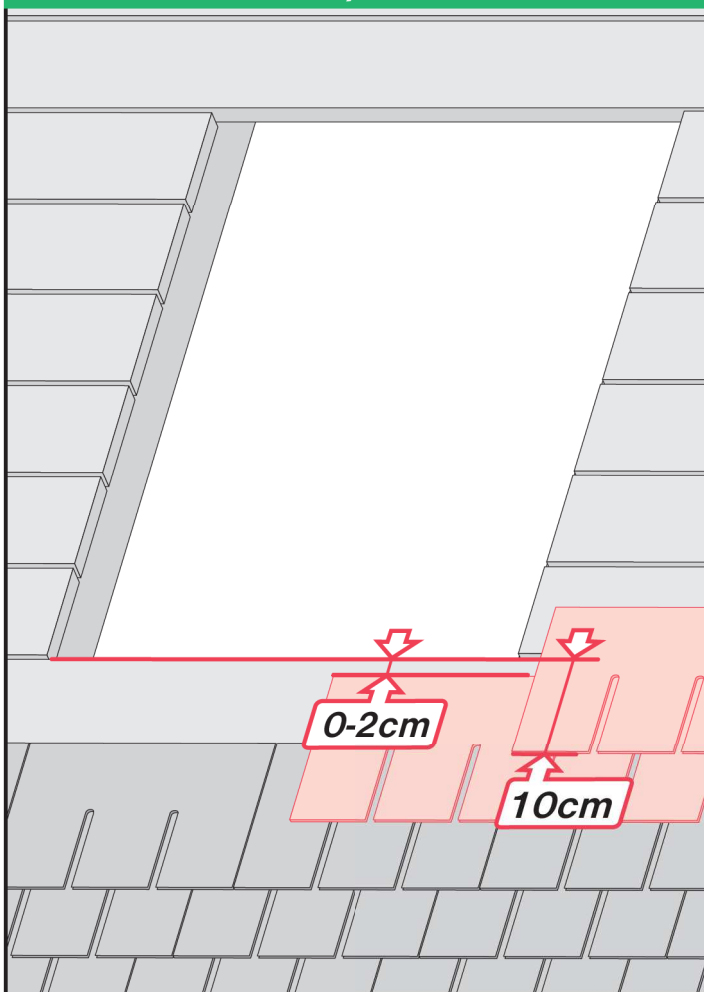




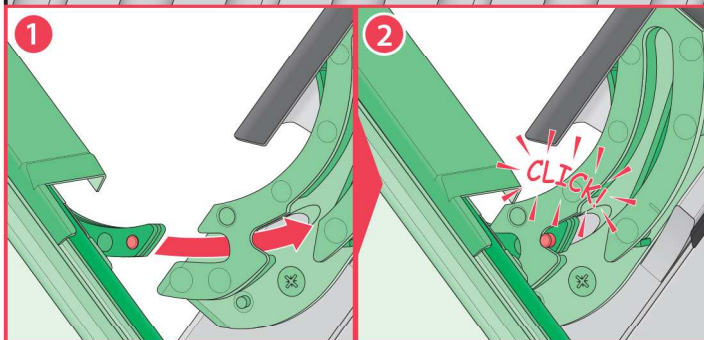
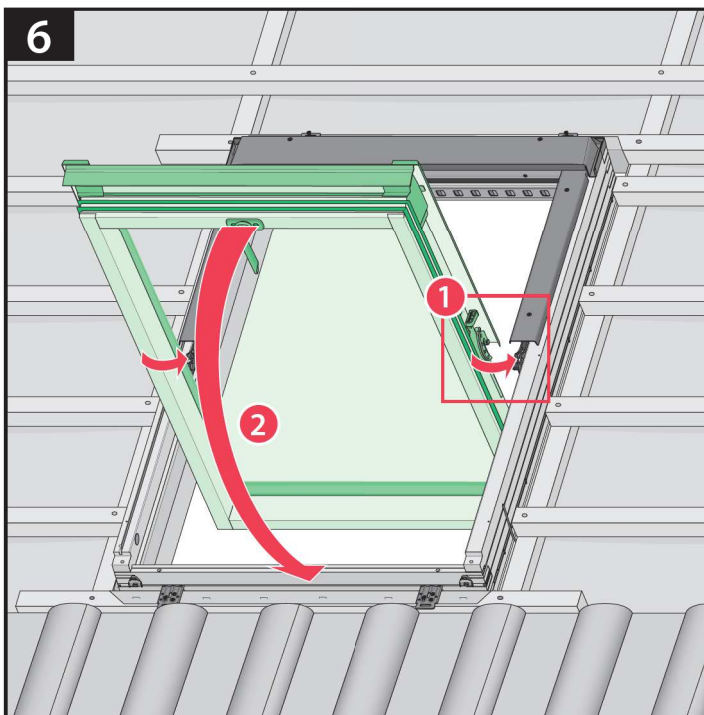
Diagram 4 illustrates the installation of a green waterproofing membrane on a roof structure. The membrane is being laid over a wooden batten. A red stapler is used to secure the membrane to the batten. A red measuring tool is also visible.

5

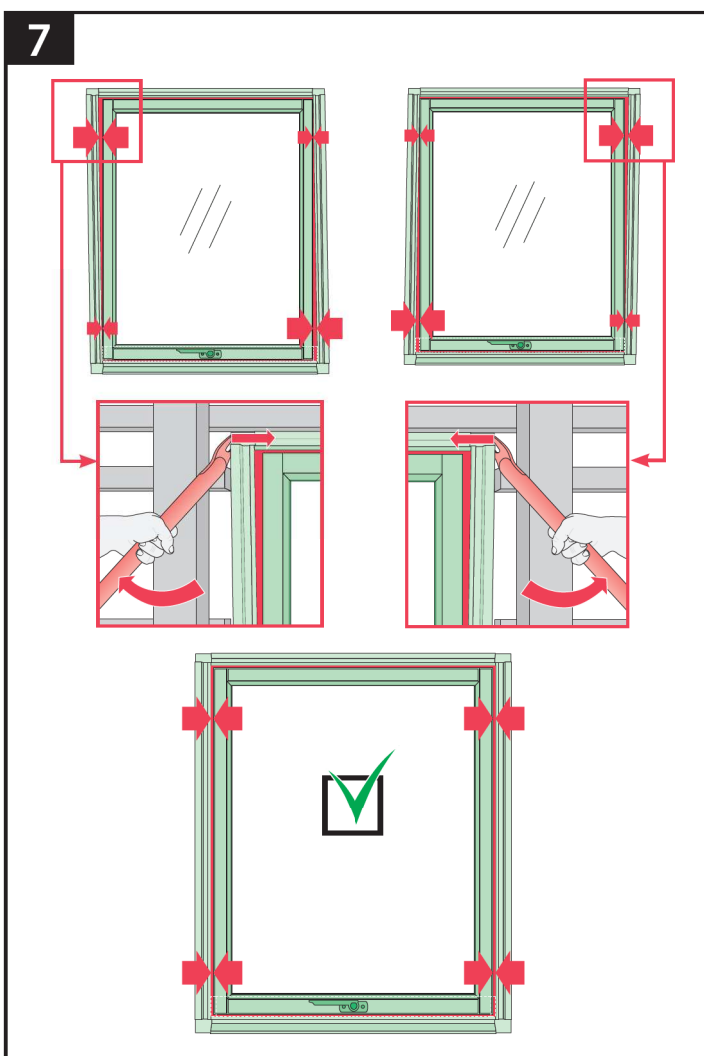
30 mm

22 cm

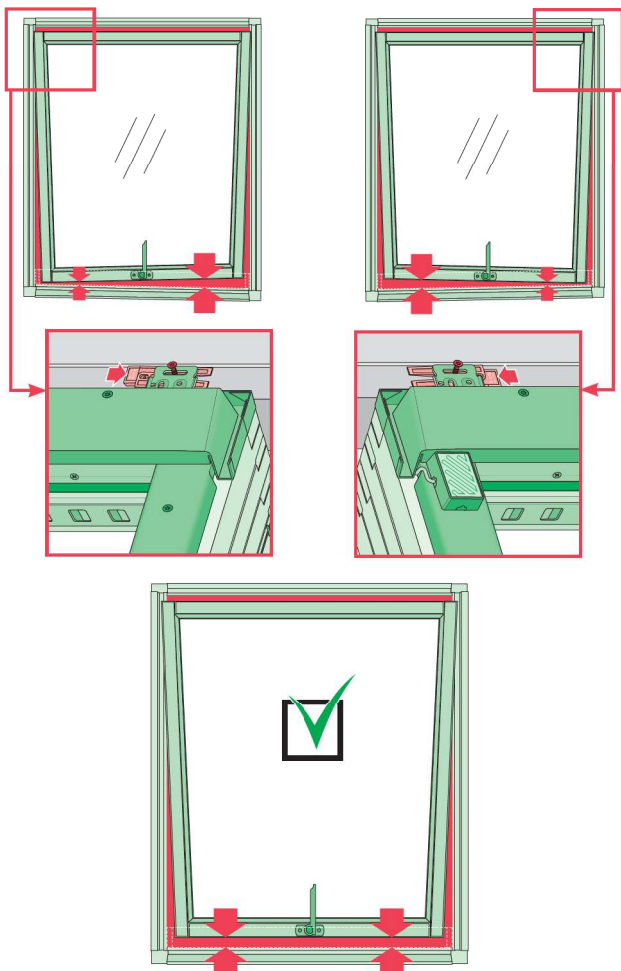
6



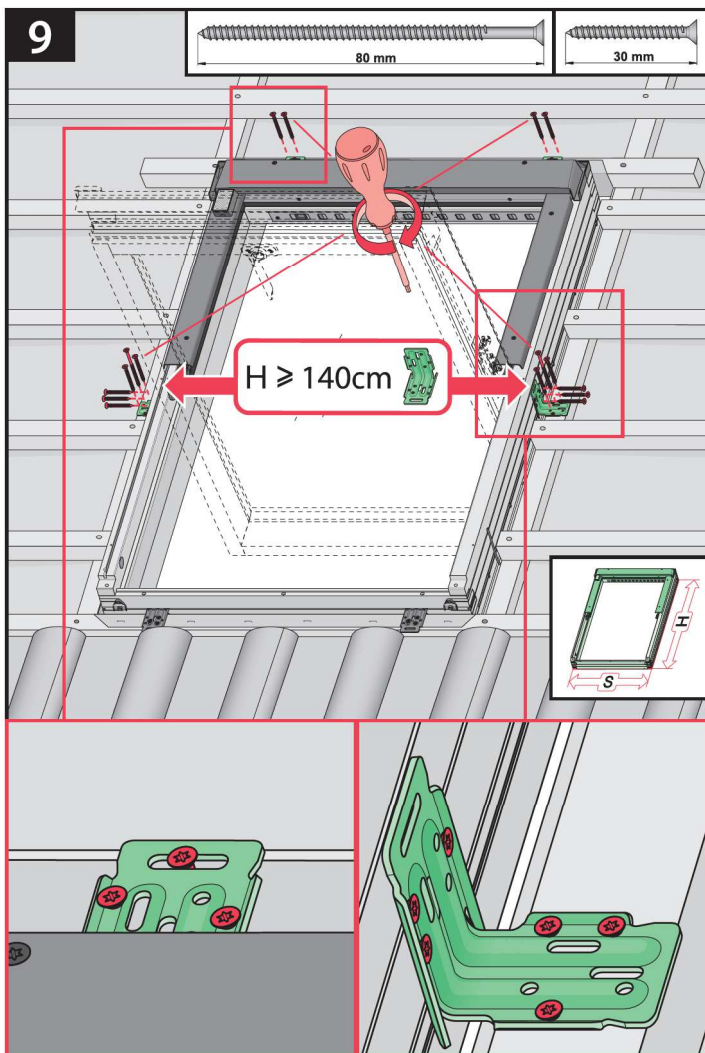
7



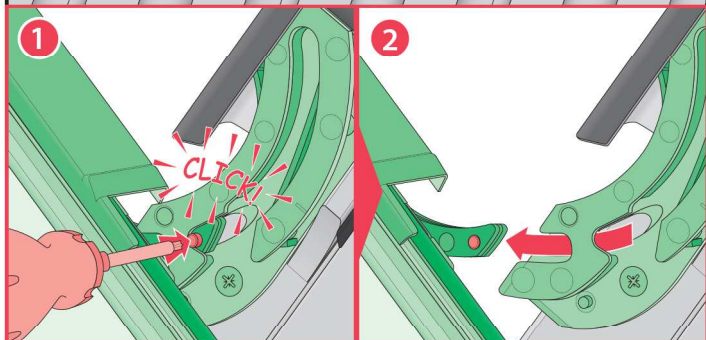
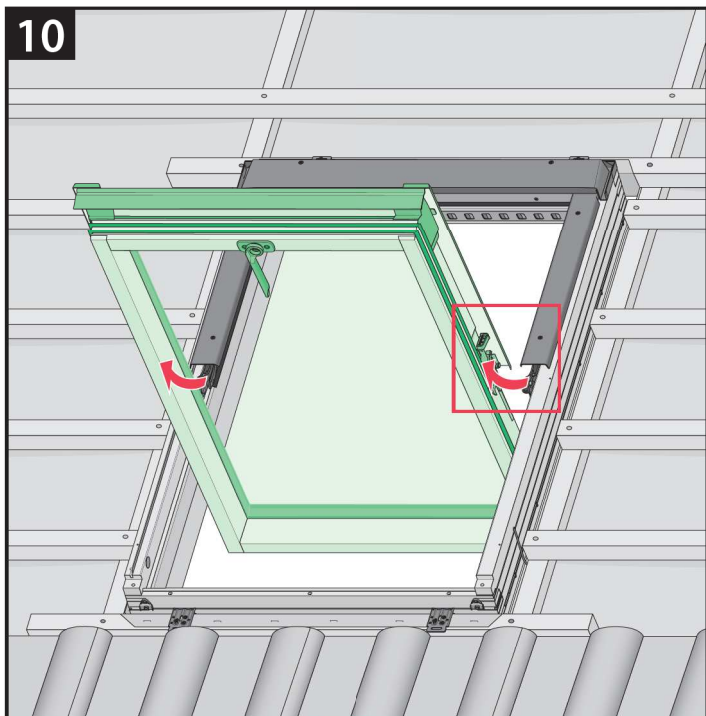
8



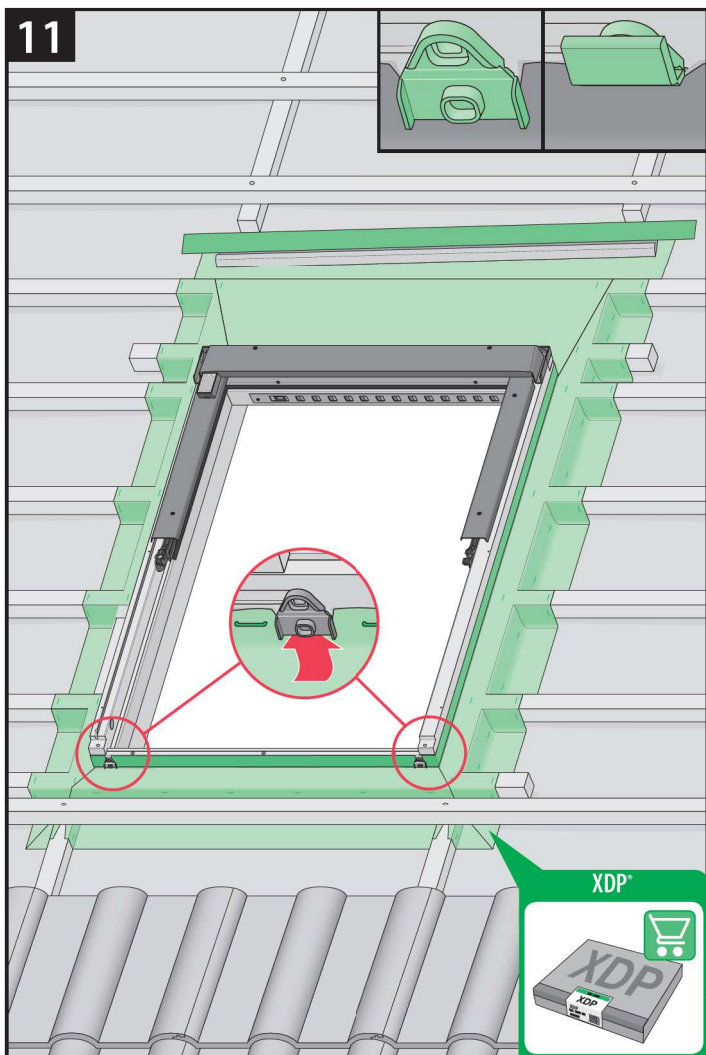
9



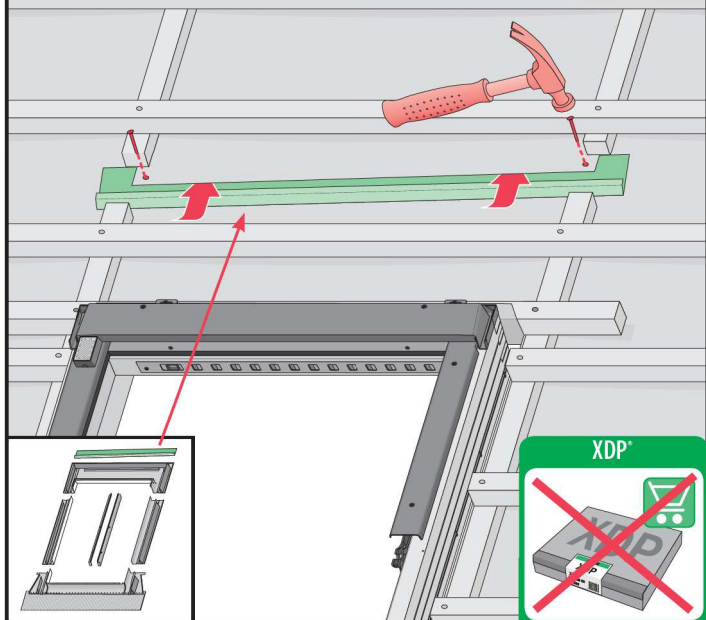
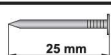
10



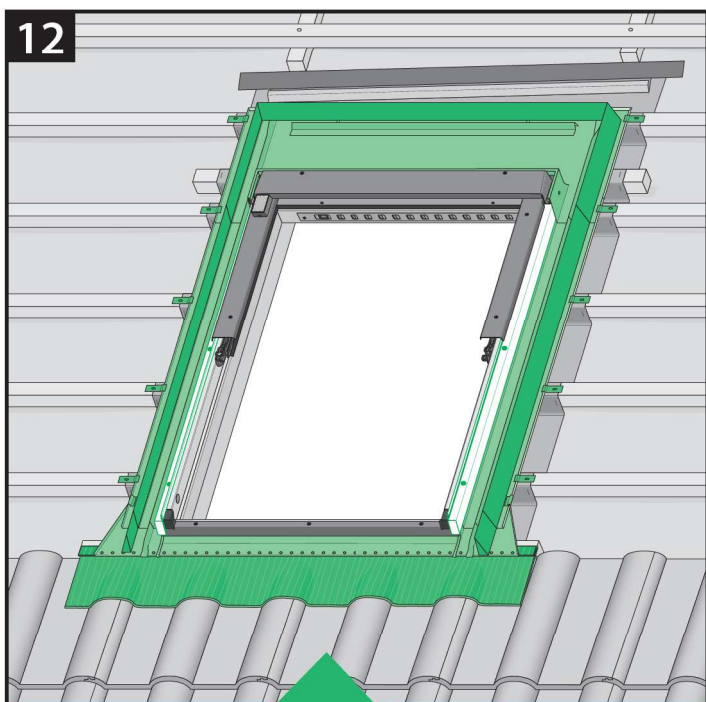
11



11\*



12



EHN  
EHV



EZN  
EZV



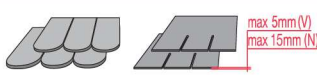
ESN  
ESV



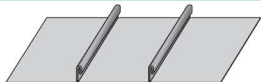
EGV



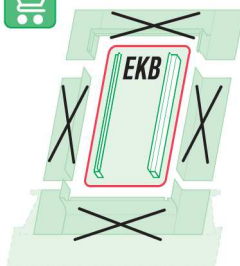
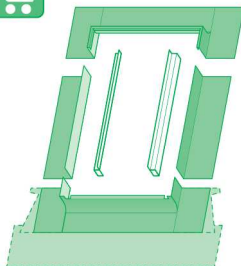
EPV



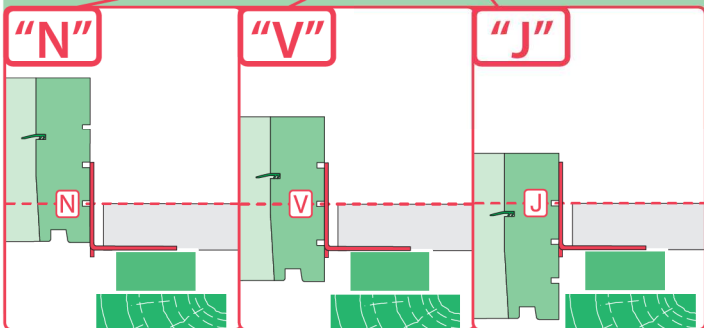
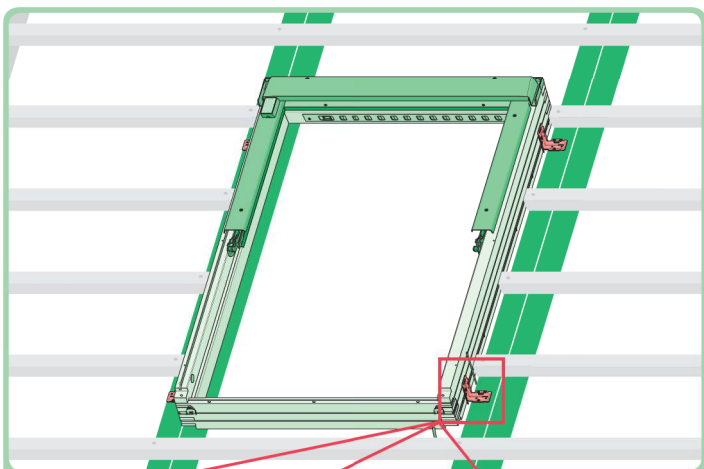
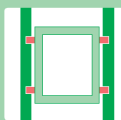
ELN  
ELV

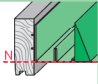

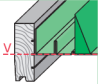

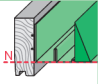

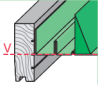

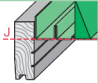

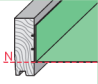

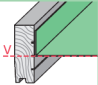

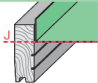

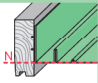

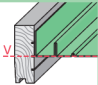

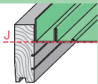



EEN  
EEV



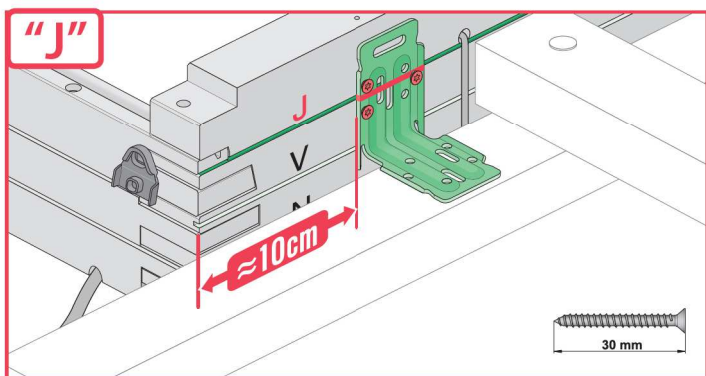
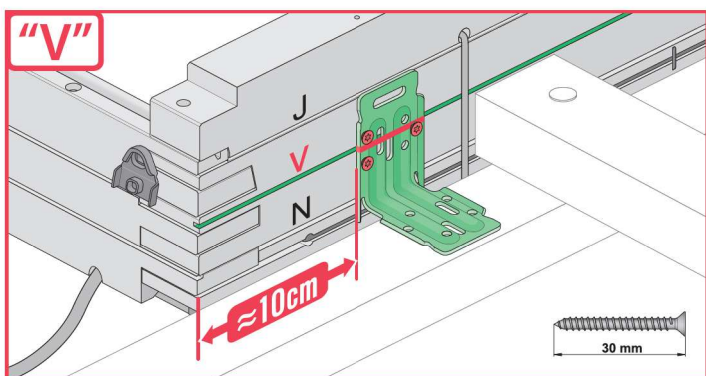
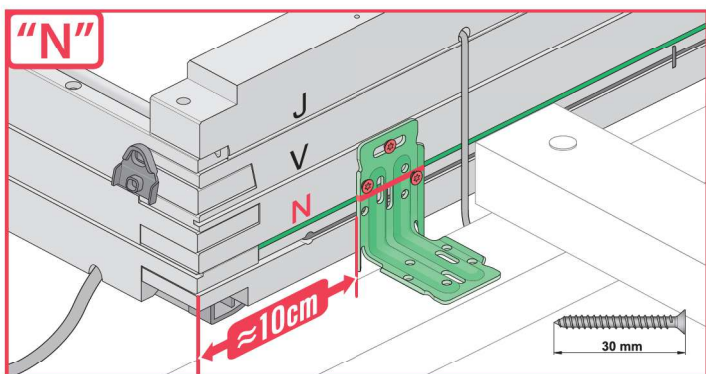
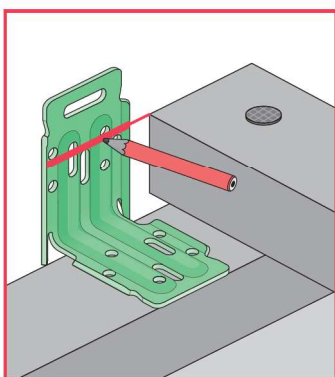
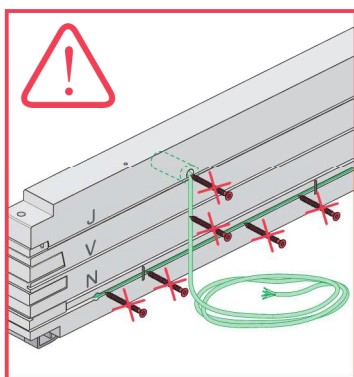
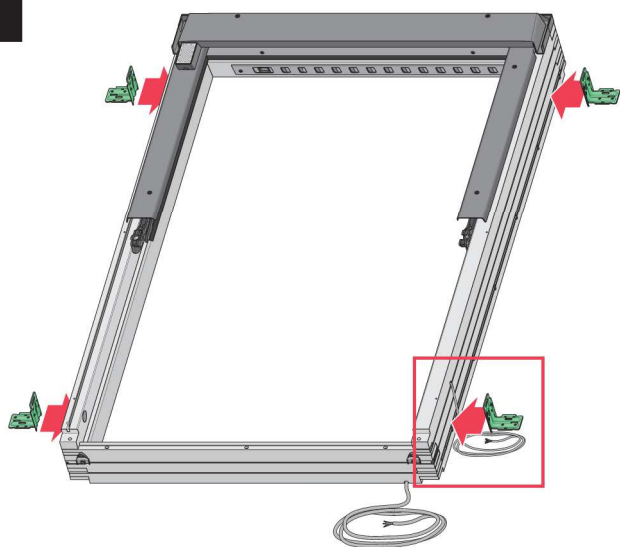




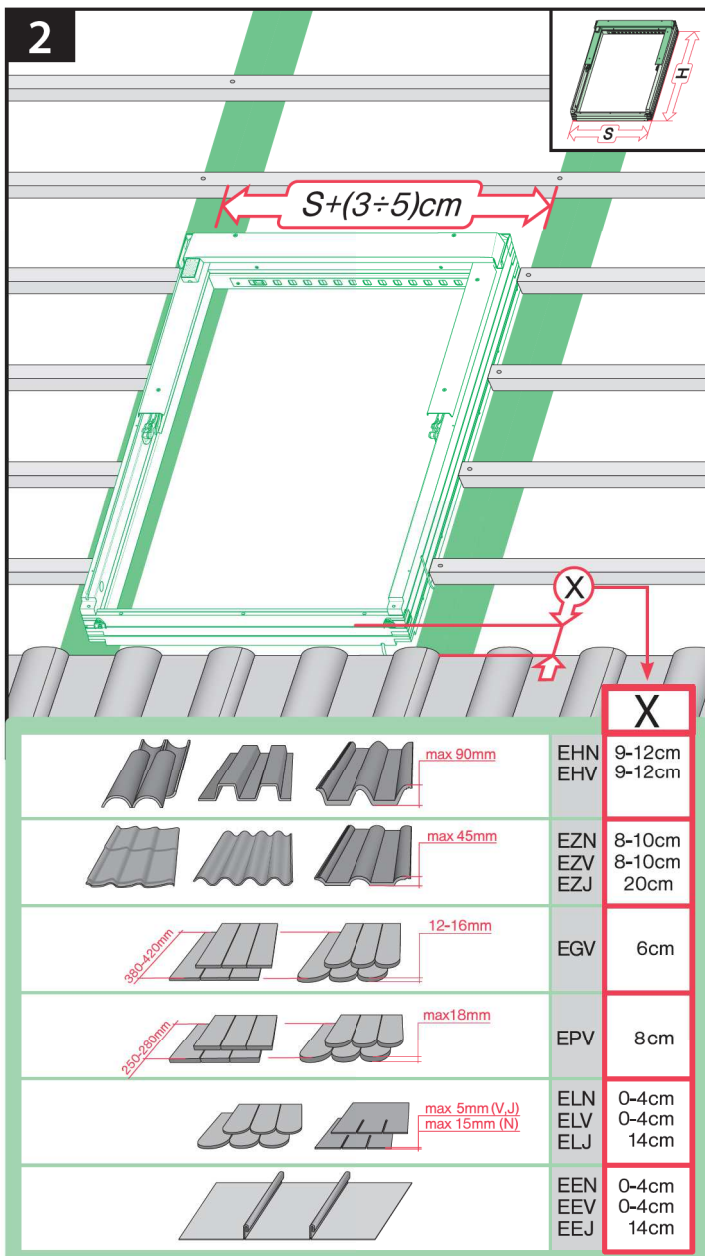
	<p>max 90mm</p>	EHN		
		EHV		
		-	-	-
	<p>max 45mm</p>	EZN		
		EZV		
		EZJ		
	<p>max 15mm (N) max 5mm (V) max 5mm (J)</p>	ELN		
		ELV		
		ELJ		
	<p>max 5mm</p>	ESN		
		ESV		
		ESJ		



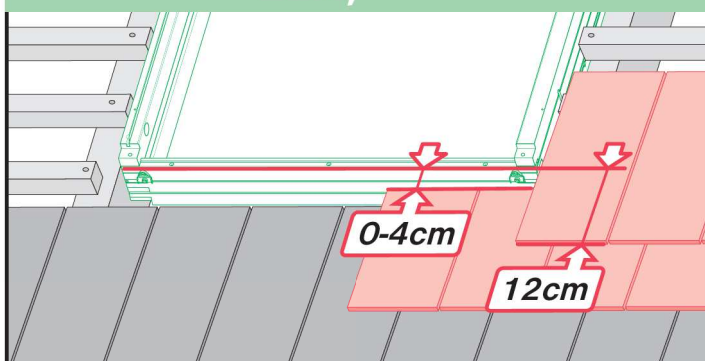
1



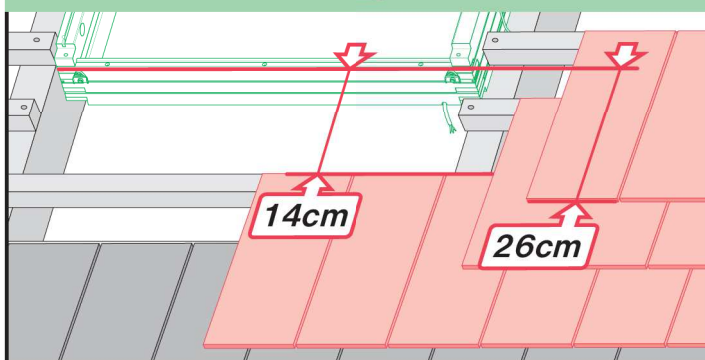
2



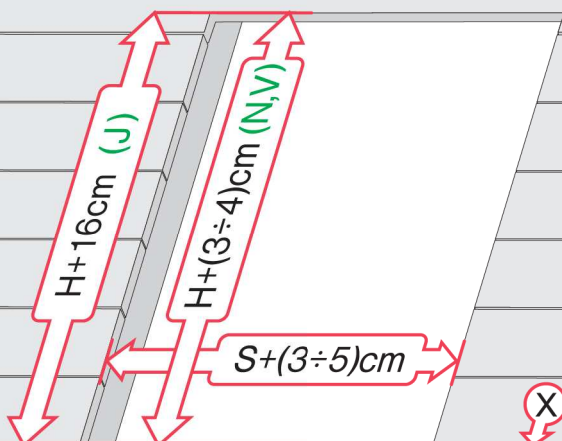
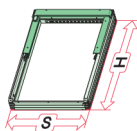
## ELN, ELV



## ELJ



3



X

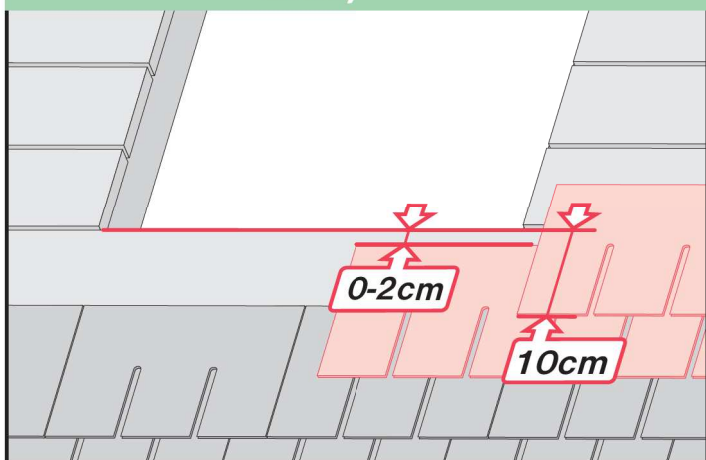


max 5mm

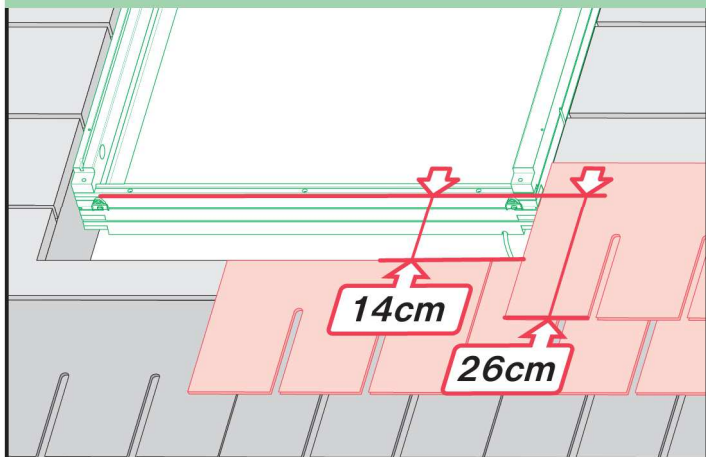
ESN  
ESV  
ESJ

0-2cm  
0-2cm  
0cm

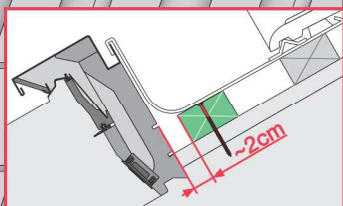
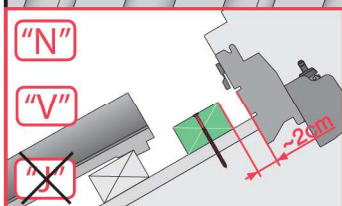
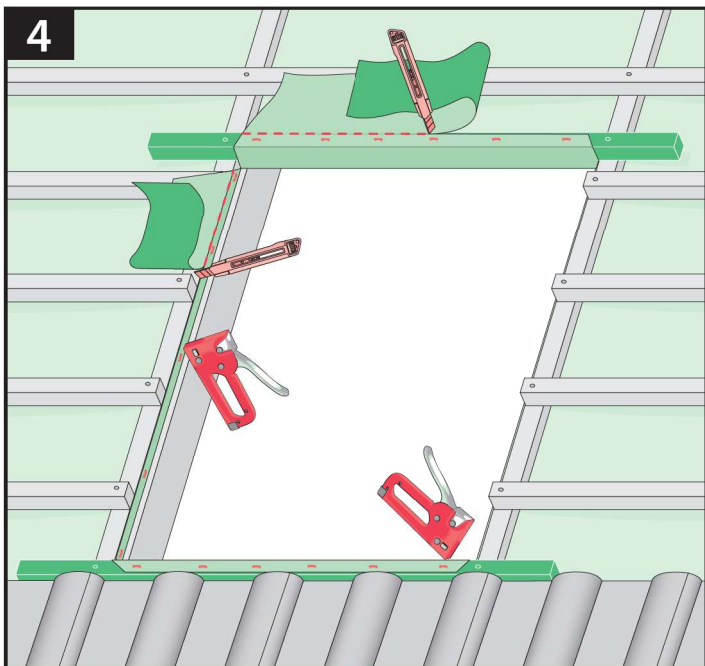
ESN, ESV



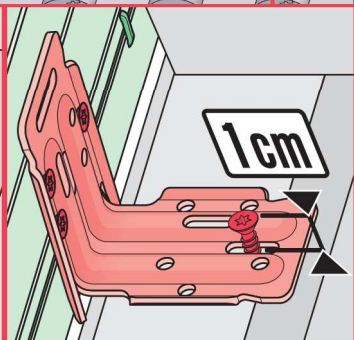
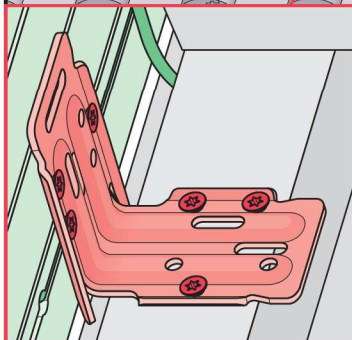
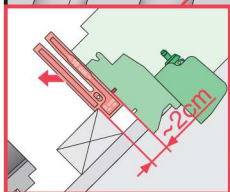
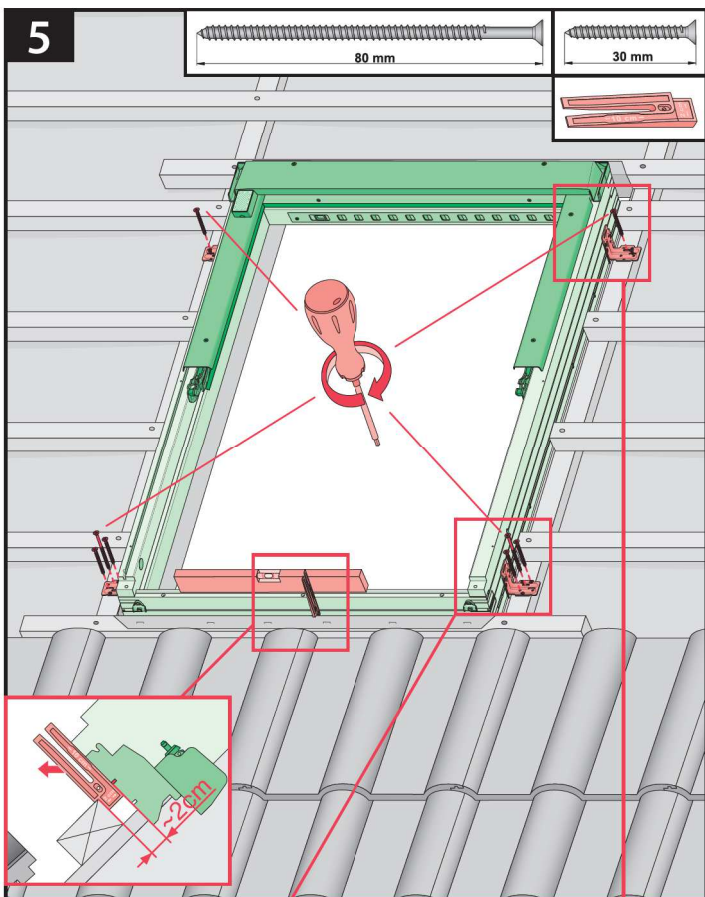
ESJ



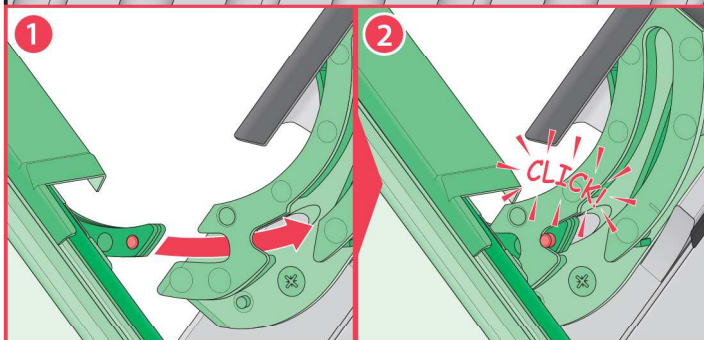
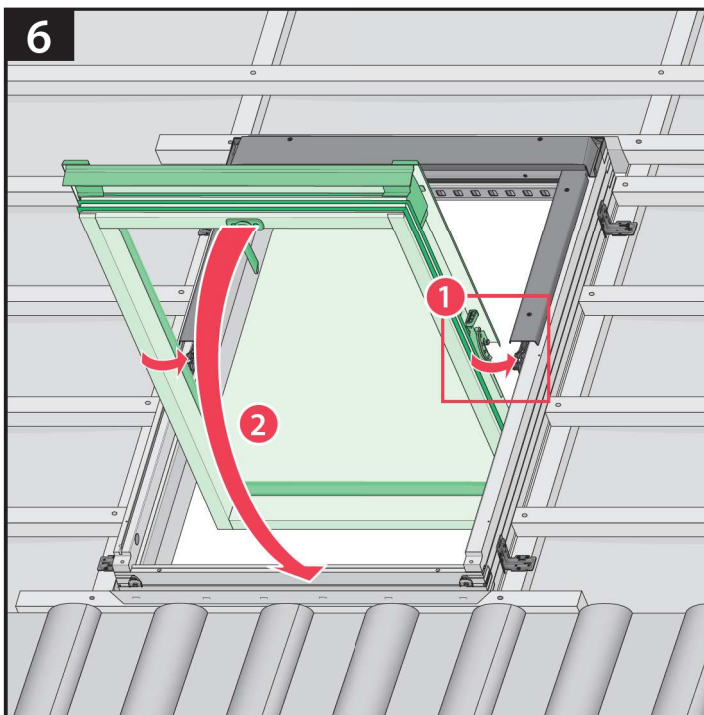
4



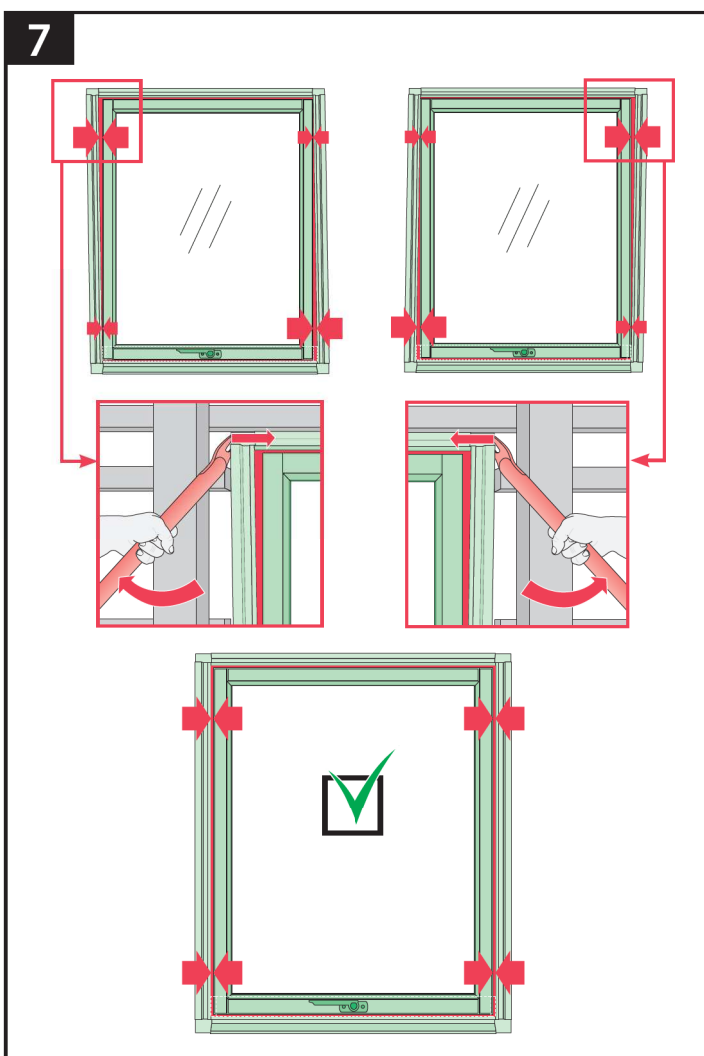
5



6

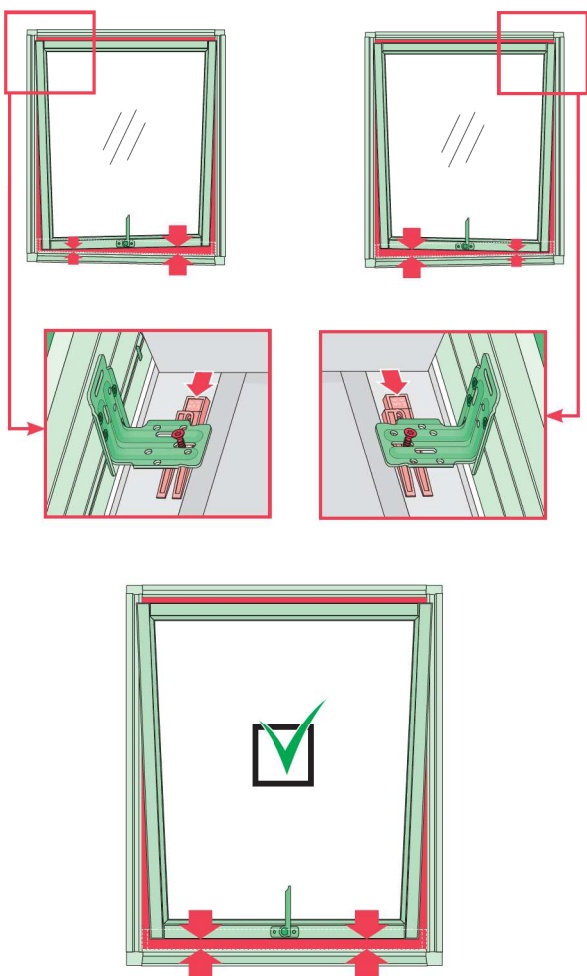


7

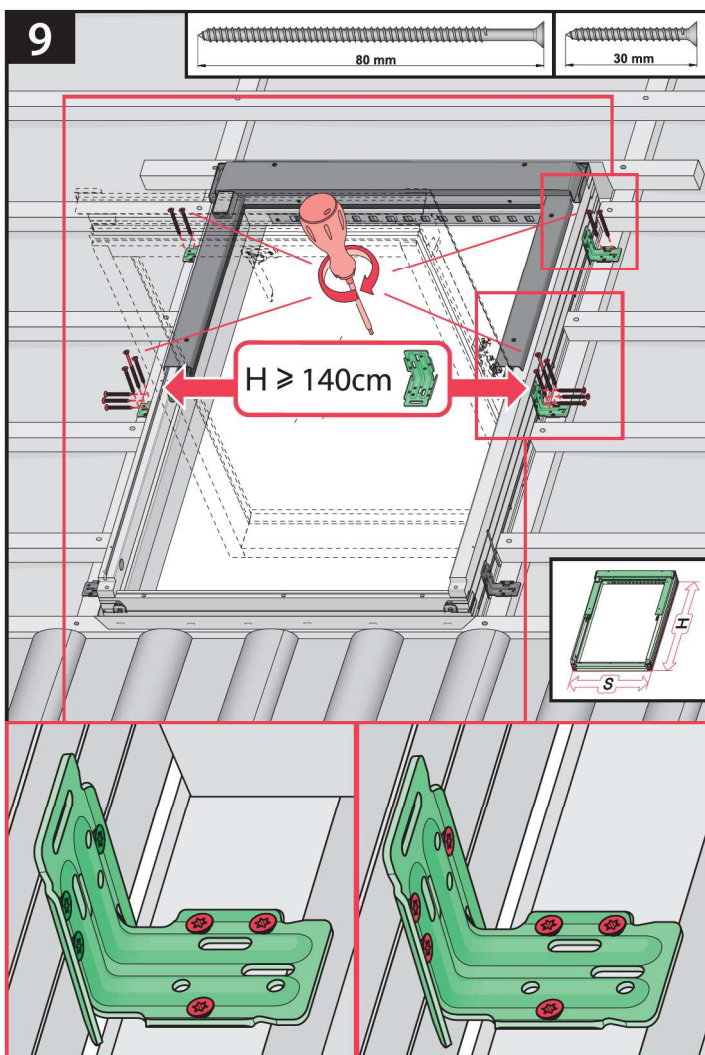




8

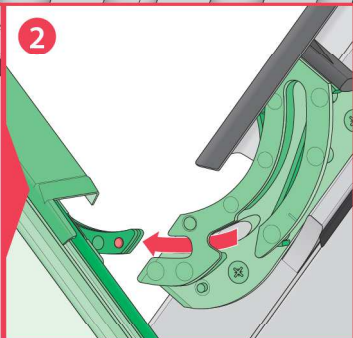
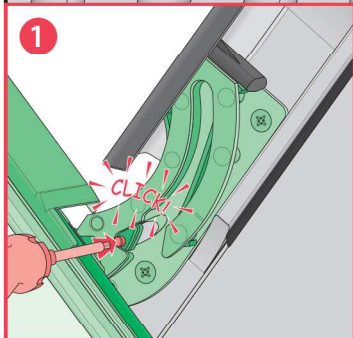
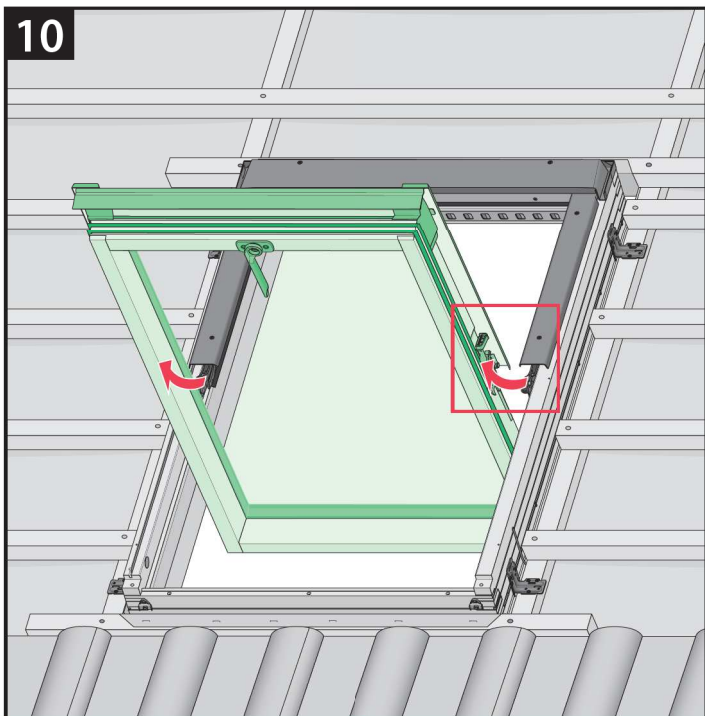


9

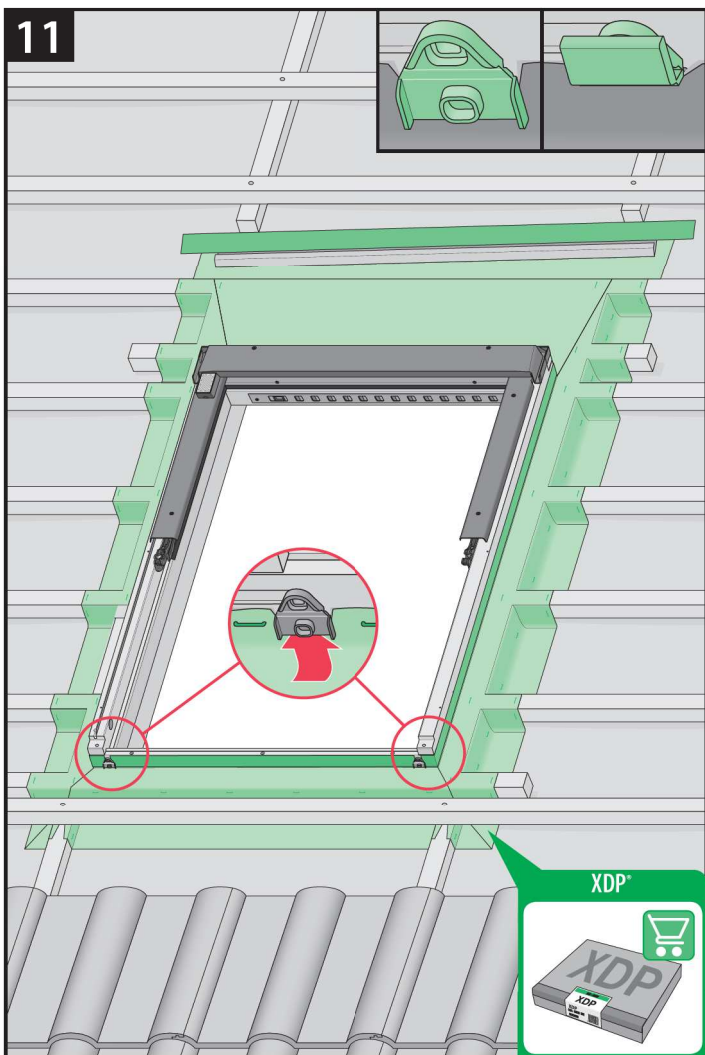




10



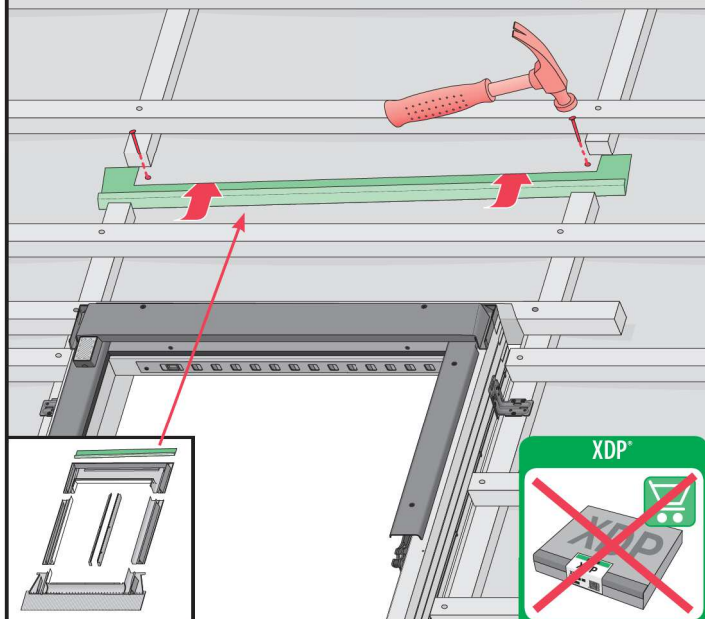
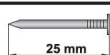
11



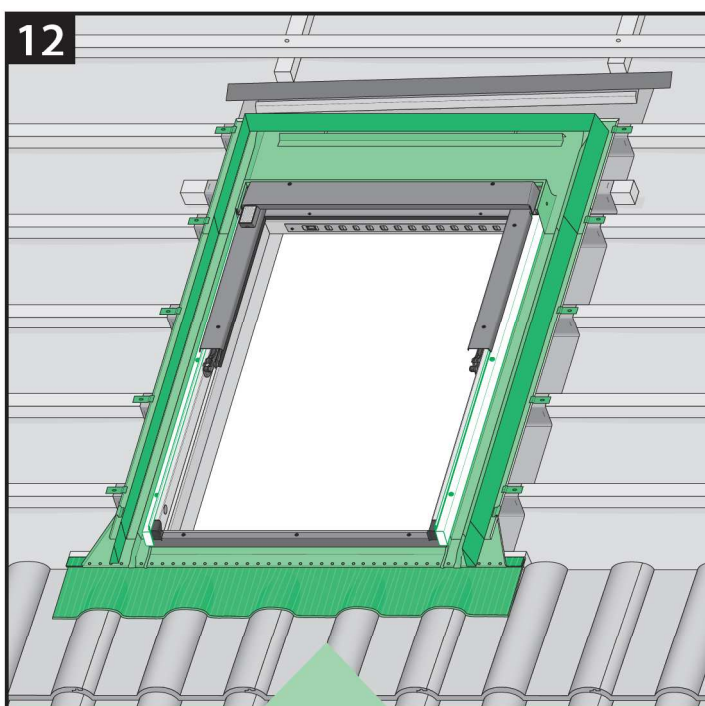
XDP®



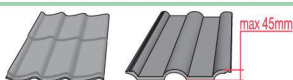
11\*



12



EHN  
EHV



EZN  
EZV  
EZJ



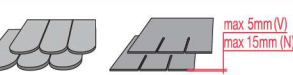
ESN  
ESV  
ESJ



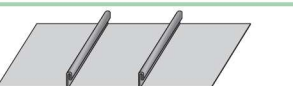
EGV



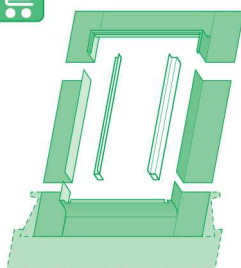
EPV

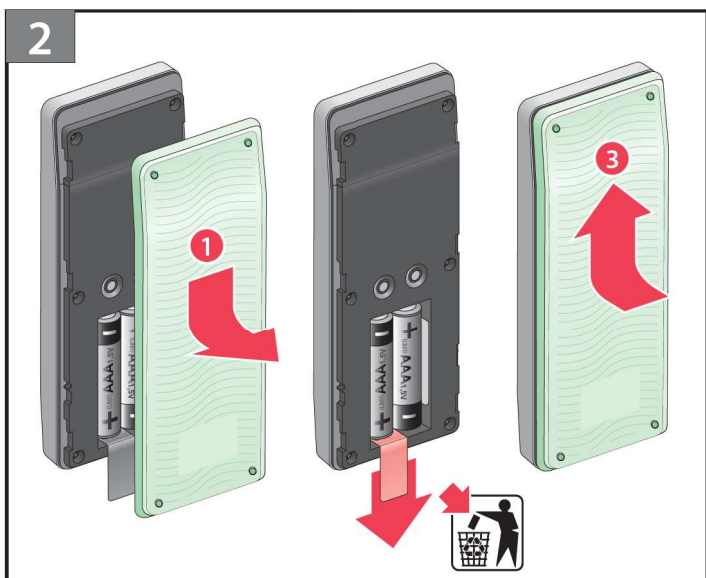
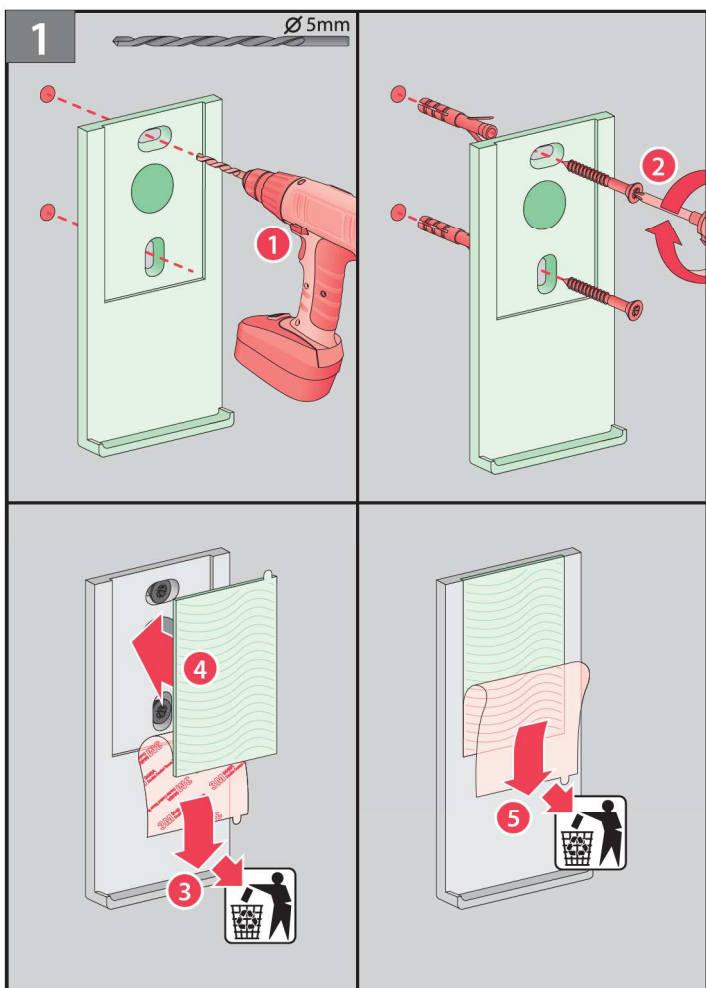
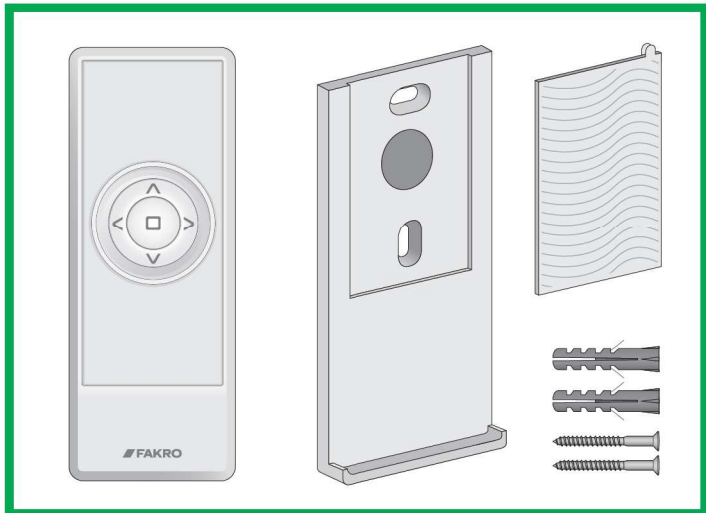


ELN  
ELV  
ELJ

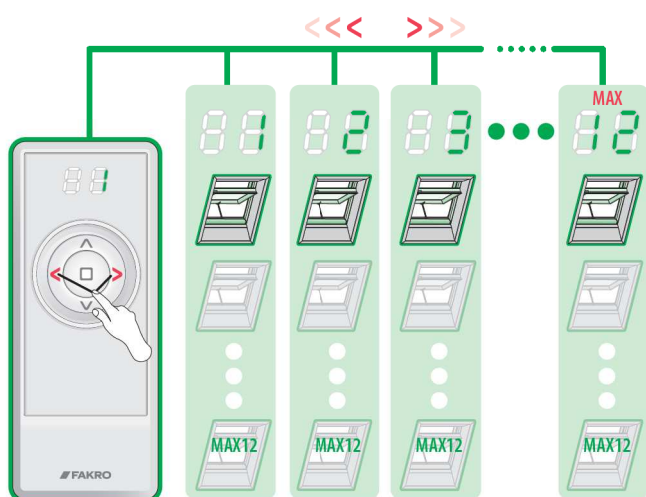


EEN  
EEV  
EEJ

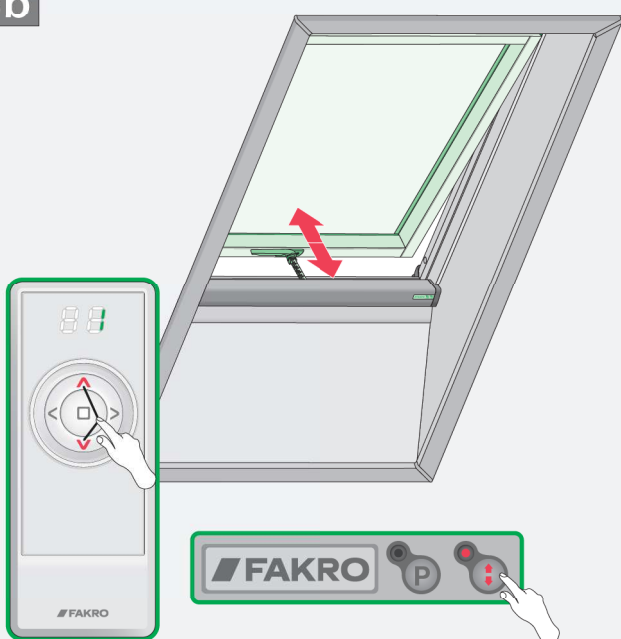




3a



3b



3c







CZ	Výrobce ani prodejce nenesou žádnou odpovědnost za nedodržení příslušných právních zákonů, stavebních předpisů a bezpečnostních požadavků uživatelem výrobku, architektem, montážníkem nebo vlastníkem budovy.	NL	De fabrikant en verkoper zijn niet aansprakelijk voor gevolgen bij het niet opvolgen van voorspelde wetten, bouwbesluiten en veiligheidsvoorschriften door de gebruiker van het product, de architect, de installateur of de eigenaar van het gebouw.
DE	Hersteller und Verkäufer übernehmen keine Haftung für Nichtbeachtung entsprechender Rechts- und Bauvorschriften sowie Sicherheitsanforderungen seitens Produktbenutzers, Architekten, Monteurs oder Gebäudebesitzers.	PL	Producent i Sprzedawca nie ponosi żadnej odpowiedzialności za nieprzestrzeganie stosownych przepisów prawa, przepisów budowlanych i wymogów bezpieczeństwa przez użytkownika produktu, architekta, montażystę lub właściciela budynku.
ES	El fabricante y el vendedor no tienen ninguna responsabilidad por el incumplimiento de la ley vigente, normas de construcción y exigencias de seguridad por parte del usuario del producto, arquitecto, instalador o el propietario del edificio.	PT	O fabricante e o vendedor não tem nenhuma responsabilidade pelo o não cumprimento da lei, códigos de construção e as exigências de segurança por parte do usuário do produto, arquiteto, instalador ou proprietário do edifício.
FR	Le fabricant et le revendeur ne prend aucune responsabilité de ne pas respecter les lois applicables, les règlements sur les bâtiments et les exigences de sécurité par l'utilisateur du produit, l'architecte, l'installateur ou le propriétaire du bâtiment.	RO	Nici producătorul, nici distribuitorul nu își vor asuma niciun fel de răspundere pentru nerespectarea legilor în vigoare, a legilor din domeniul construcțiilor sau a măsurilor de siguranță impuse utilizatorilor produsului, arhitecților, montatorilor sau proprietarilor clădirii.
GB	Manufacturer and Seller shall bear no liability for failure to comply with the applicable laws, building codes and safety requirements by the user of the product, architect, fitter or owner of the building.	RU	В случае несоблюдения архитектором, монтажником или владельцем здания строительных правил и норм безопасности ответственность с производителя и продавца снимается.
HU	A Gyártó és a Forgalmazó nem vállal semmiféle felelősséget a vonatkozó törvényi, építési és biztonsági előírások terjedelmében, építész, beépítőmester vagy épülettulajdonos által be nem tartásáért.	SK	Výrobca a predajca nenesú žiadnu zodpovednosť za nedodržanie príslušných ustanovení zákona, stavebných predpisov a bezpečnostných požiadaviek užívateľom výrobku, architektom, montérom alebo majiteľom objektu.
IT	Il Produttore e il Rivenditore non potranno essere ritenuti responsabili per il mancato rispetto, da parte dell'utente del prodotto, del progettista, dell'installatore o del proprietario dell'edificio, delle leggi vigenti, nonché dei regolamenti edilizi e di quelli relativi alla sicurezza.		